


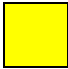

1. Manufacturer Information

Manufacturer:	iRobot Corporation
Address:	8 Crosby Drive, Bedford, MA 01730 USA
Website:	www.iRobot.com
File Number:	315G3390.001



2. Product Information

Model Identification	Roomba 650/620 (Jabil)
Product Description	Roomba 6xxxy Series Vacuum Cleaning Robot
Type Designation(s):	Vacuum Cleaning Robot
WEEE Category:	Category 2 (Small household appliances)
Weight [g]:	3,777g
Recyclability:	88.63%

	Type I	Material/components which must be removed and treated separately According to Annex II of the 2012/19/EU (WEEE) directive.
	Type II	Material/components which can disturb certain recycling processes.
	Type III	Material/components which have an economic value at end-of-life.

3. Recycling Information: (Optional)

- Are plastic parts >10g marked according to ISO 11469?
- Is the product manufactured of 20% recycled material?

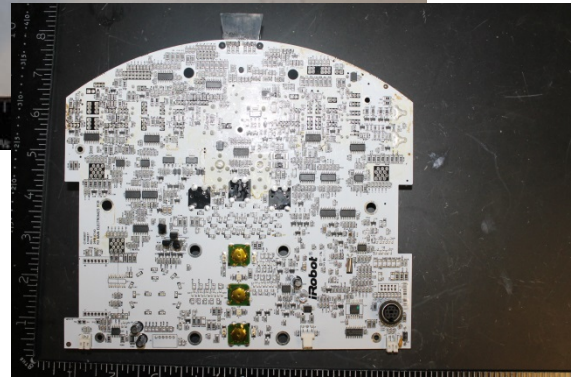
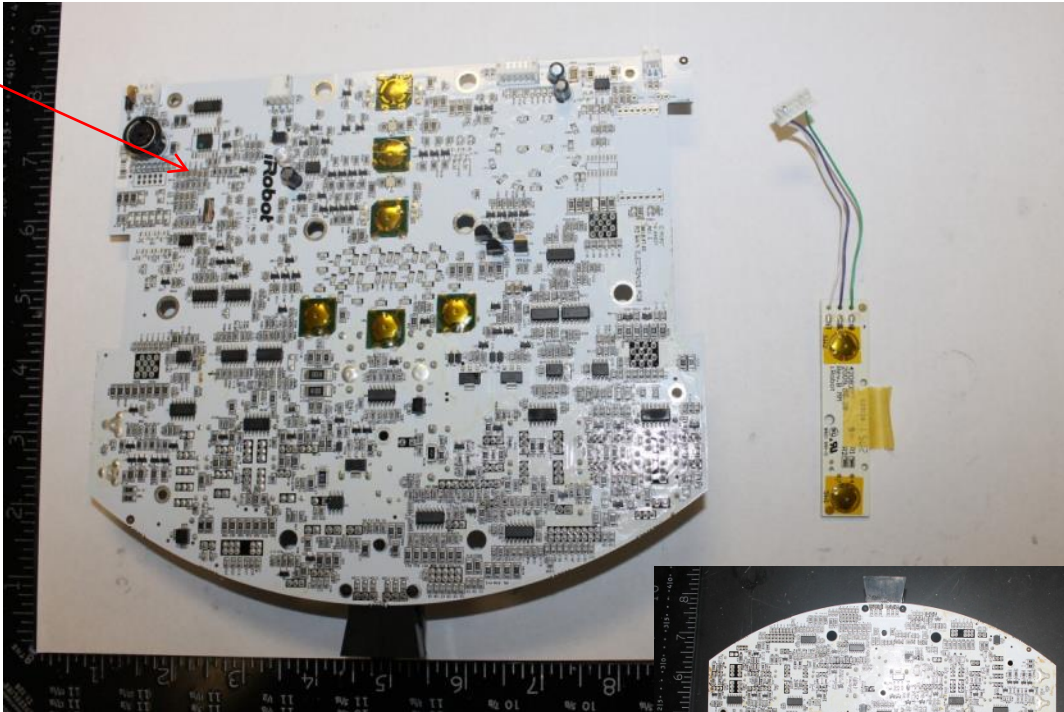
4. Directives and Standards: (Optional)

The following directives and standards have been considered:

- EN 50419:2006 - "Marking of electrical and electronic equipment in accordance with Article 11(2) of Directive 2012/19/EU (WEEE)
- 2012/19/EU - Directive 2012/19/EU of the European Parliament and of the Council of July 4, 2012 on waste of electrical and electronic equipment (WEEE)
- ISO 11469 - "Generic Identification and Marking of Plastic Products"



5. Instructions for removing materials/components which must be removed and treated separately:

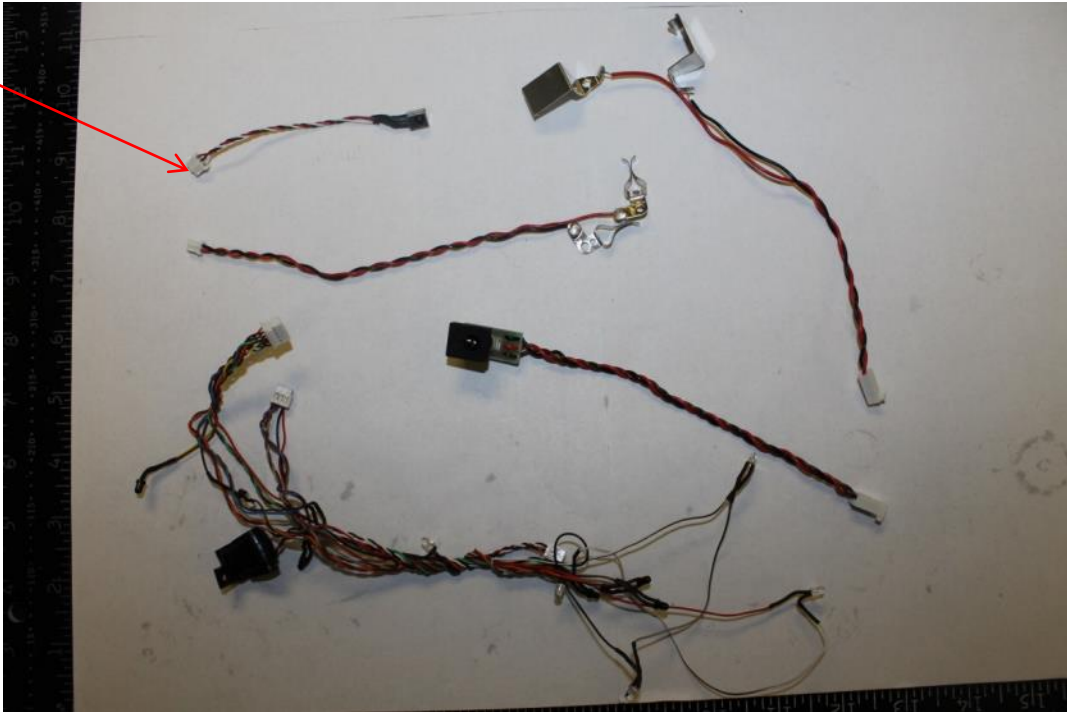


Recycling Information:

Nr.	Component	Material	Wt. (g)	Comments
1	Roomba Main PCBs	PCB	185	Treat Separately, 50% Recycle



5. Instructions for removing materials/components which must be removed and treated separately:

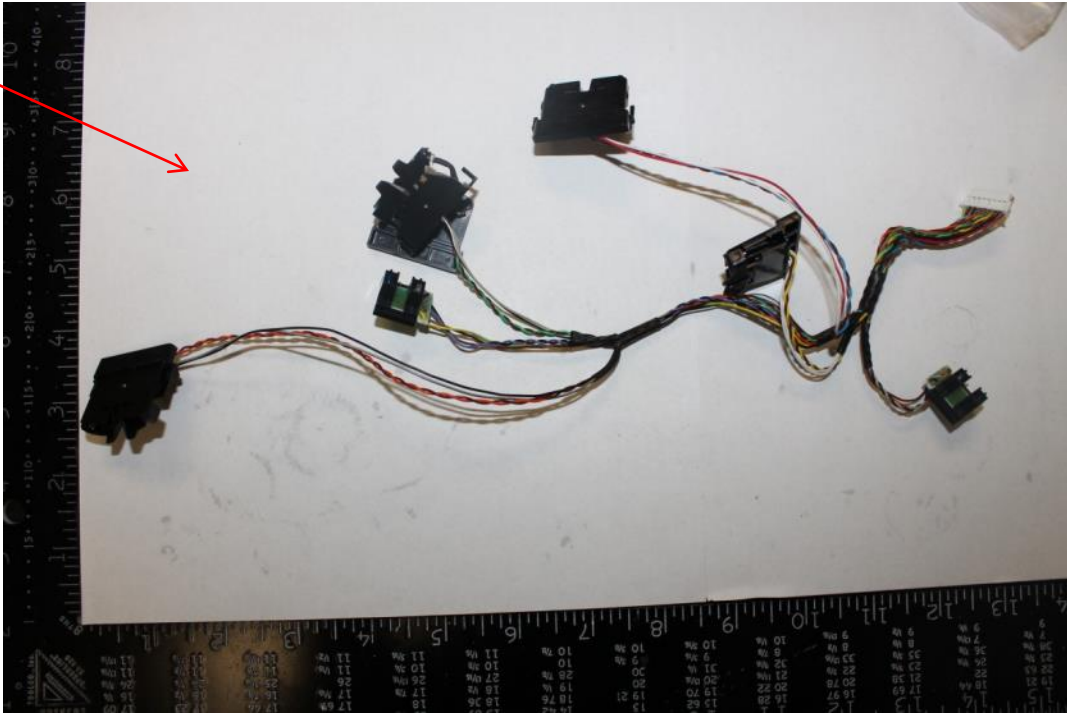


Recycling Information:

Nr.	Component	Material	Wt. (g)	Comments
2	Cables	Non-Reusable Cables	29	Treat Separately, 40% Recycle, 60% incinerate



5. Instructions for removing materials/components which must be removed and treated separately:

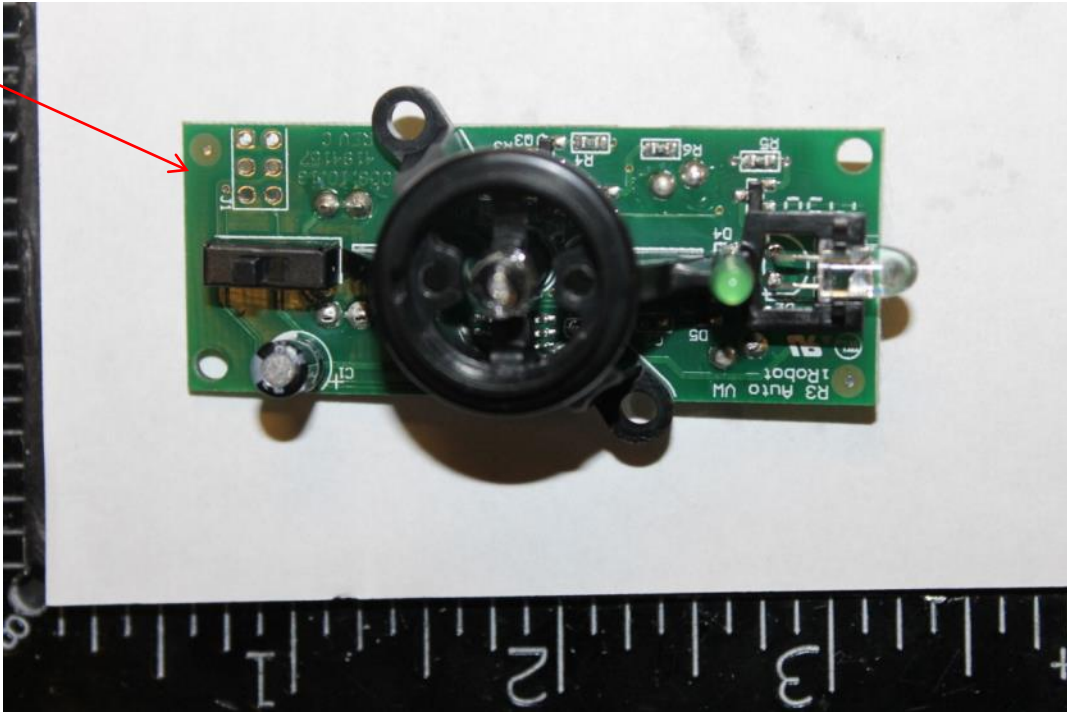


Recycling Information:

Nr.	Component	Material	Wt. (g)	Comments
3	Cable Sensor Assembly	Non-Reusable Cables	23	Treat Separately, 40% Recycle, 60% incinerate



5. Instructions for removing materials/components which must be removed and treated separately:

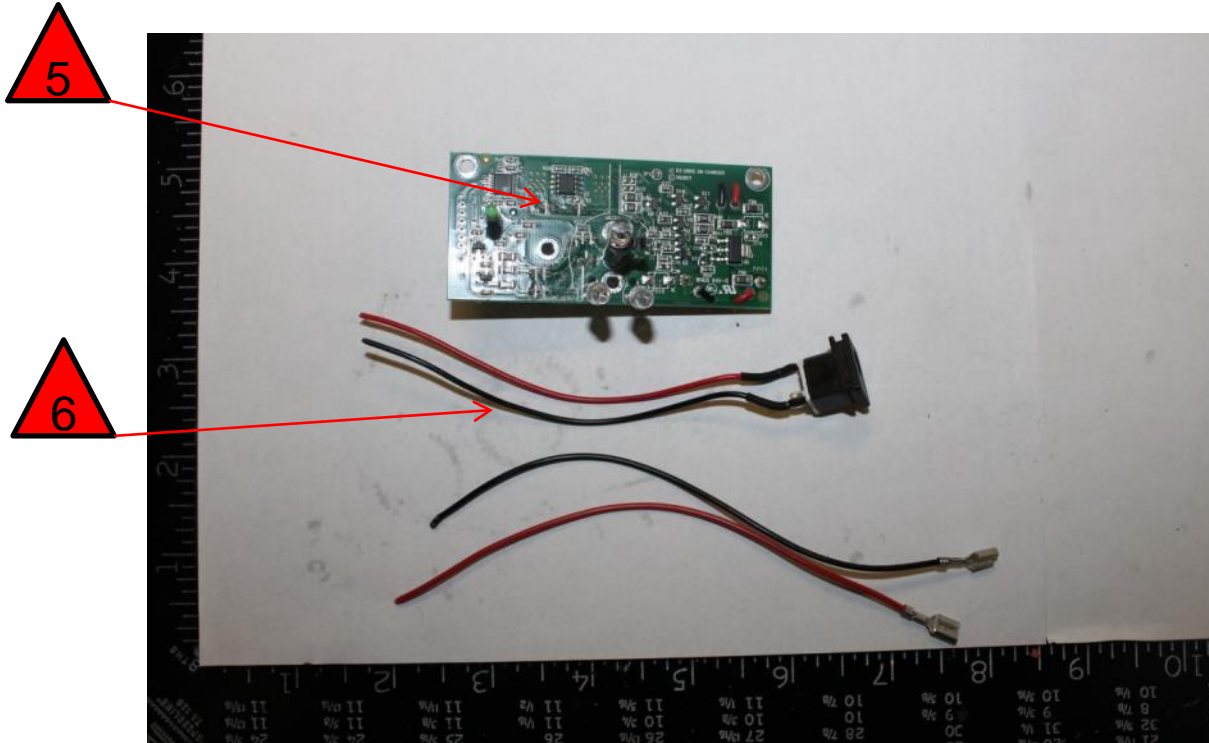


Recycling Information:

Nr.	Component	Material	Wt. (g)	Comments
4	Invisible Barrier PCB	PCB	11	Treat Separately, 50% Recycle



5. Instructions for removing materials/components which must be removed and treated separately:

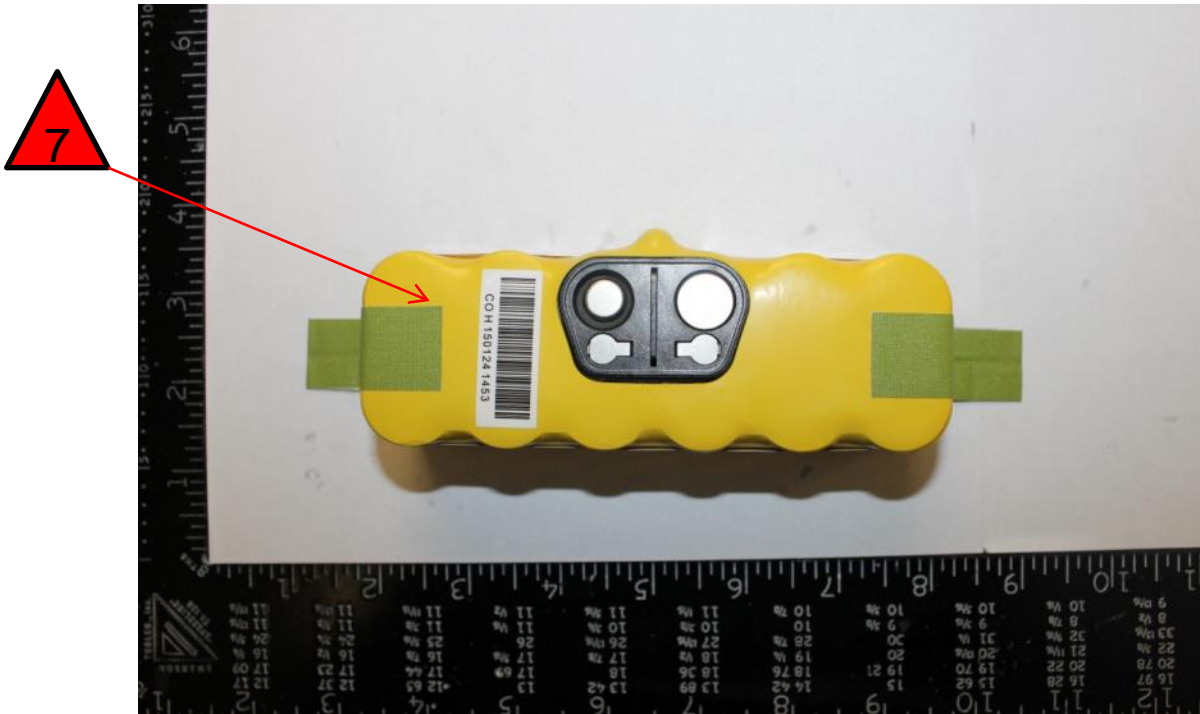


Recycling Information:

Nr.	Component	Material	Wt. (g)	Comments
5	Charging Base PCB	PCB	15	Treat Separately, 50% Recycle
6	Charging Base Cables	Non-Reusable Cables	6	Treat Separately, 40% Recycle, 60% incinerate



5. Instructions for removing materials/components which must be removed and treated separately:

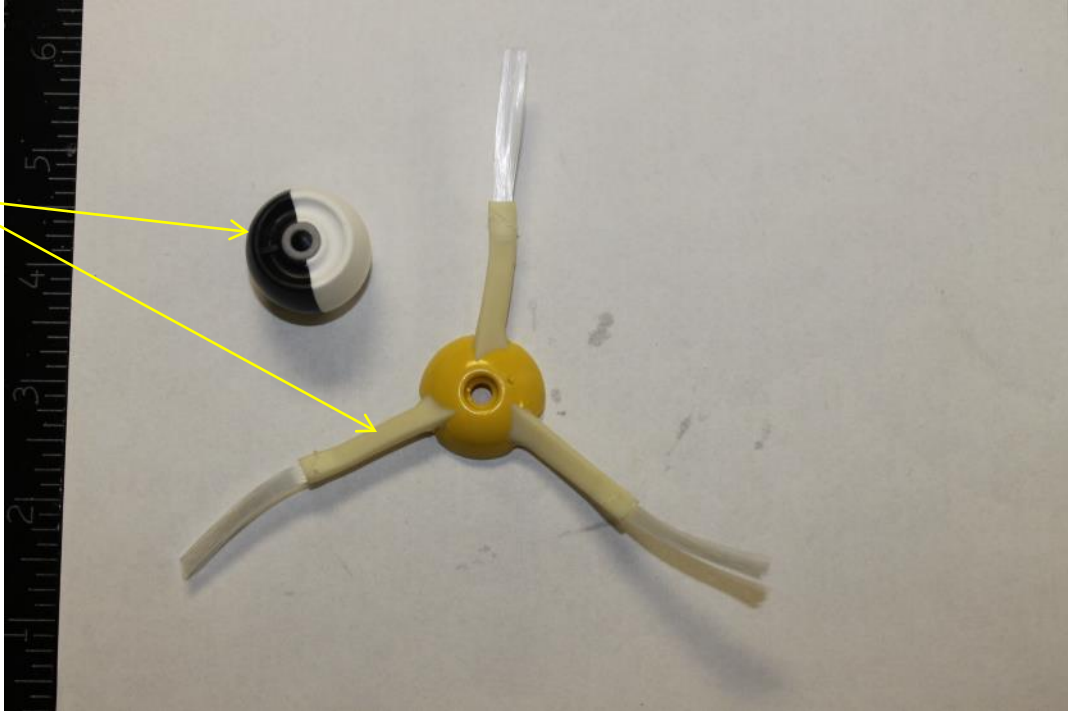


Recycling Information:

Nr.	Component	Material	Wt. (g)	Comments
7	Battery	Battery	687	Treat Separately < Refer To Batteries Directive (2006/66/EC)>



6. Components/materials which may disturb certain recycling processes

**Recycling Information:**

Nr.	Component	Material	Wt. (g)	Comments
1	Wheel and Brush	Non-ID Plastic	17	Waste

 6. Components/materials which may disturb certain recycling processes**Recycling Information:**

Nr.	Component	Material	Wt. (g)	Comments
2	PCB Shields	Non-ID Plastic	6	Waste

6. Components/materials which may disturb certain recycling processes

3

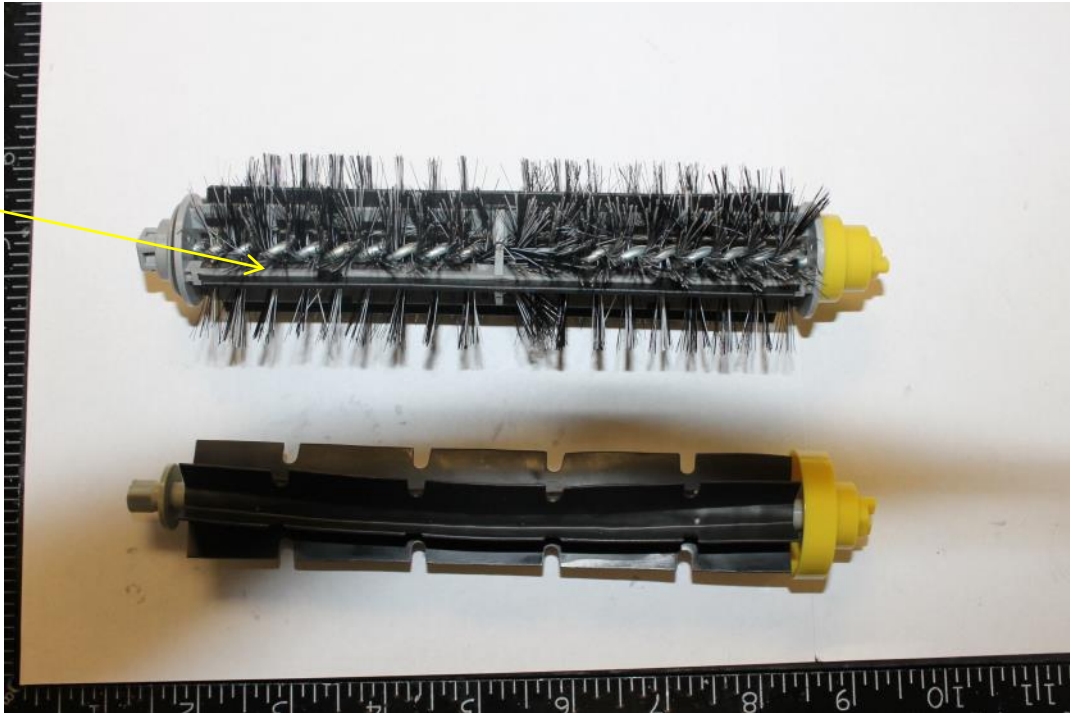


Recycling Information:

Nr.	Component	Material	Wt. (g)	Comments
3	Gear Wheels	Non-ID Plastic	35	Waste



6. Components/materials which may disturb certain recycling processes

**Recycling Information:**

Nr.	Component	Material	Wt. (g)	Comments
4	Brush Heads	Non-ID Plastic	112	Waste



6. Components/materials which may disturb certain recycling processes

5

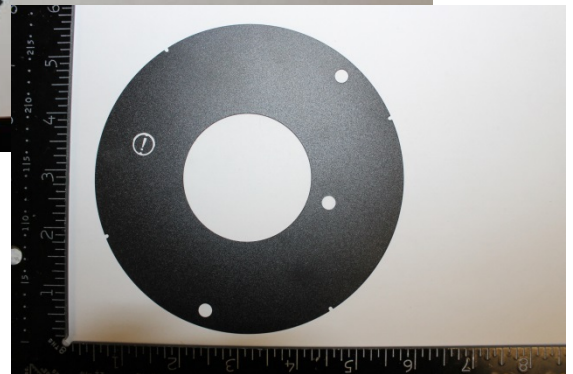
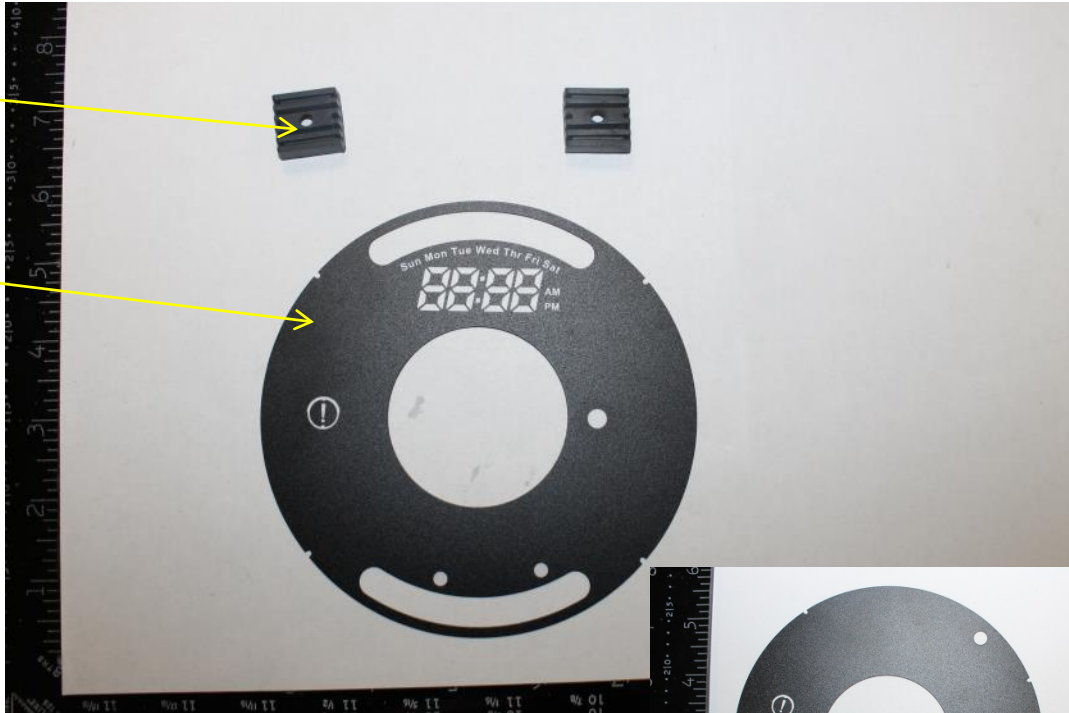
**Recycling Information:**

Nr.	Component	Material	Wt. (g)	Comments
5	Filters	Non-ID Plastic	38	Waste

6

6. Components/materials which may disturb certain recycling processes
**Recycling Information:**

Nr.	Component	Material	Wt. (g)	Comments
6	Comb Cleaning Tool	Non-ID Plastic	7	Waste

 6. Components/materials which may disturb certain recycling processes**Recycling Information:**

Nr.	Component	Material	Wt. (g)	Comments
7	Rubber Skids	Non-ID Rubber	3	Incinerate
8	Display circle	Non-ID Plastic	2	Waste



7. Material/components which have an economic value at end-of-life.

**Recycling Information:**

Nr.	Component	Material	Wt. (g)	Comments
1	External casing	ABS	403	Recycle



7. Material/components which have an economic value at end-of-life.

**Recycling Information:**

Nr.	Component	Material	Wt. (g)	Comments
2	Middle Chassis	ABS	517	Recycle



7. Material/components which have an economic value at end-of-life.

**Recycling Information:**

Nr.	Component	Material	Wt. (g)	Comments
3	Handle, Front Bumper, and top Plates	ABS	287	Recycle



7. Material/components which have an economic value at end-of-life.

4



Recycling Information:

Nr.	Component	Material	Wt. (g)	Comments
4	Dust Bin and Release Buttons	ABS	193	Recycle



7. Material/components which have an economic value at end-of-life.

5

**Recycling Information:**

Nr.	Component	Material	Wt. (g)	Comments
5	Brush Holder	ABS	138	Recycle



7. Material/components which have an economic value at end-of-life.

6

**Recycling Information:**

Nr.	Component	Material	Wt. (g)	Comments
6	Front Buttons and Wheel Spin	ABS	20	Recycle



7. Material/components which have an economic value at end-of-life.

**Recycling Information:**

Nr.	Component	Material	Wt. (g)	Comments
7	Bumper Brackets, Button Bracket, and Dust bin motor Case	ABS	104	Recycle



7. Material/components which have an economic value at end-of-life.



Recycling Information:

Nr.	Component	Material	Wt. (g)	Comments
8	Wheel casings	ABS	157	Recycle

9

7. Material/components which have an economic value at end-of-life.

**Recycling Information:**

Nr.	Component	Material	Wt. (g)	Comments
9	Misc. Brackets	ABS	49	Recycle



7. Material/components which have an economic value at end-of-life.

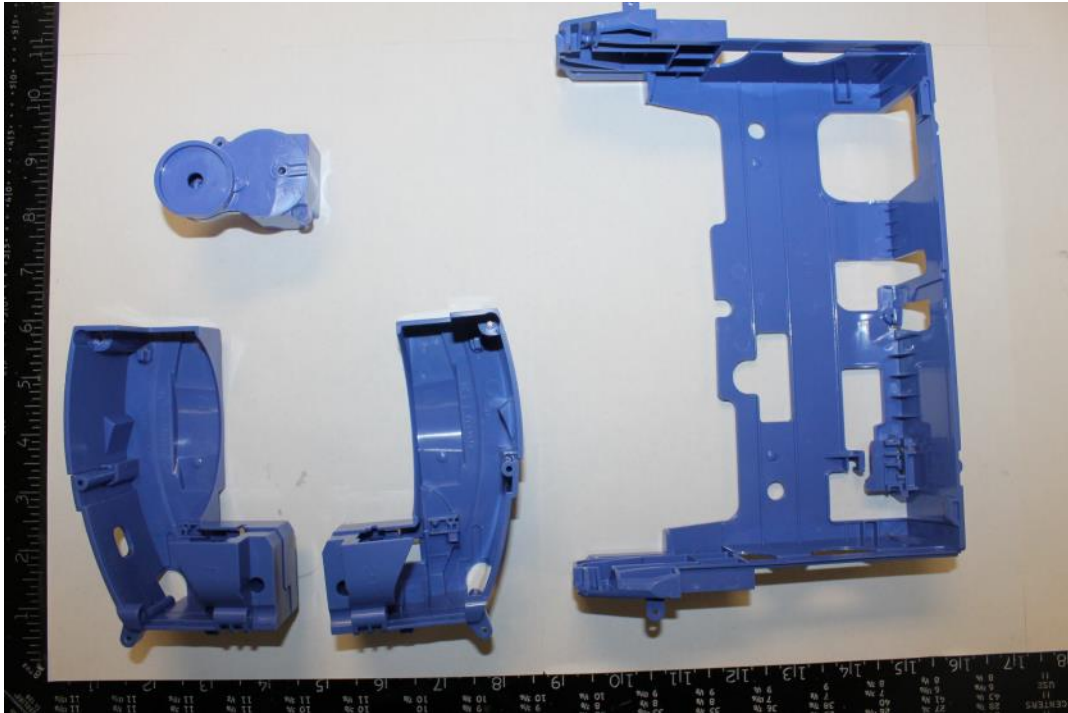
10

**Recycling Information:**

Nr.	Component	Material	Wt. (g)	Comments
10	Grey, Green, and Black Brackets	ABS	8	Recycle



7. Material/components which have an economic value at end-of-life.

**Recycling Information:**

Nr.	Component	Material	Wt. (g)	Comments
11	Blue Wheel and Brush Brackets	ABS	8	Recycle



7. Material/components which have an economic value at end-of-life.

12

**Recycling Information:**

Nr.	Component	Material	Wt. (g)	Comments
12	Outer Unit Ring	ABS	13	Recycle



7. Material/components which have an economic value at end-of-life.

13

**Recycling Information:**

Nr.	Component	Material	Wt. (g)	Comments
13	Invisible Wall Casing	ABS	80	Recycle



7. Material/components which have an economic value at end-of-life.

14

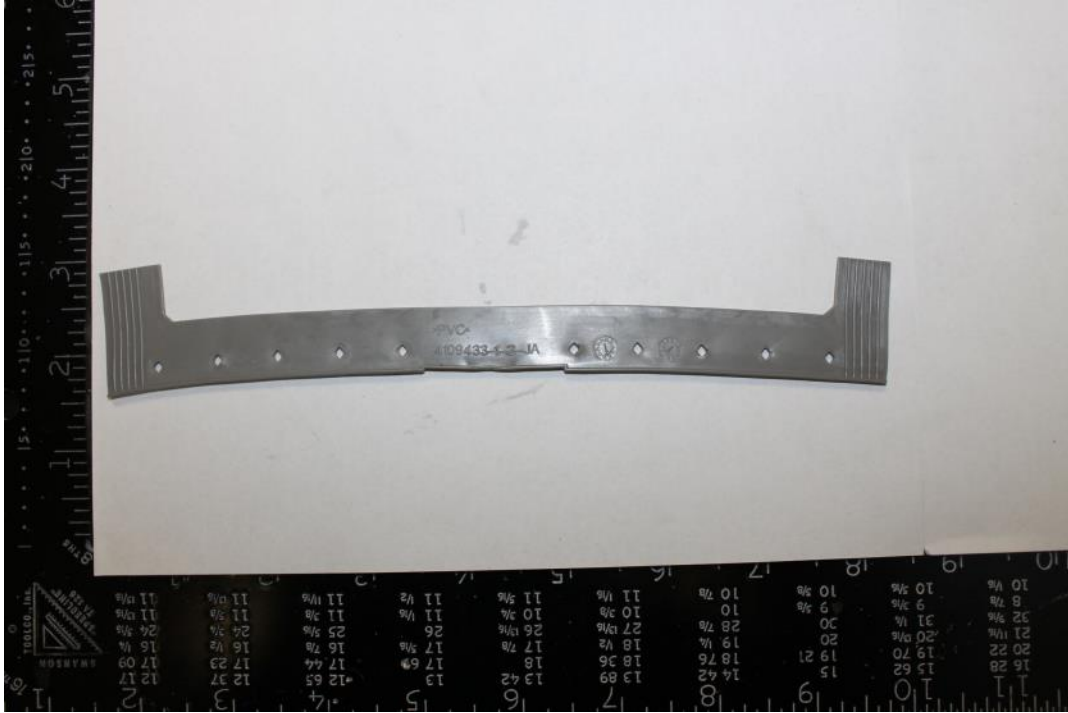
**Recycling Information:**

Nr.	Component	Material	Wt. (g)	Comments
14	Charging Dock Casing	ABS	130	Recycle



7. Material/components which have an economic value at end-of-life.

15



Recycling Information:

Nr.	Component	Material	Wt. (g)	Comments
15	Floor and Unit Seal	PVC Rubber	6	Recycle



7. Material/components which have an economic value at end-of-life.

16

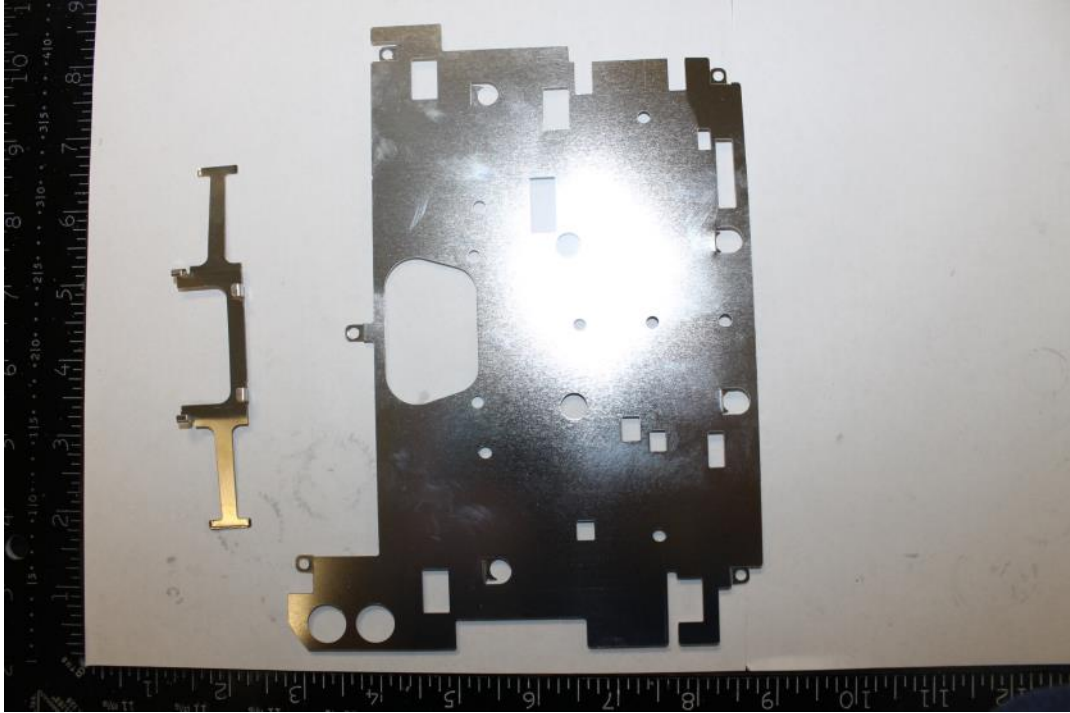
**Recycling Information:**

Nr.	Component	Material	Wt. (g)	Comments
16	Skid Pieces and Seals	PVC Rubber	5	Recycle



7. Material/components which have an economic value at end-of-life.

17

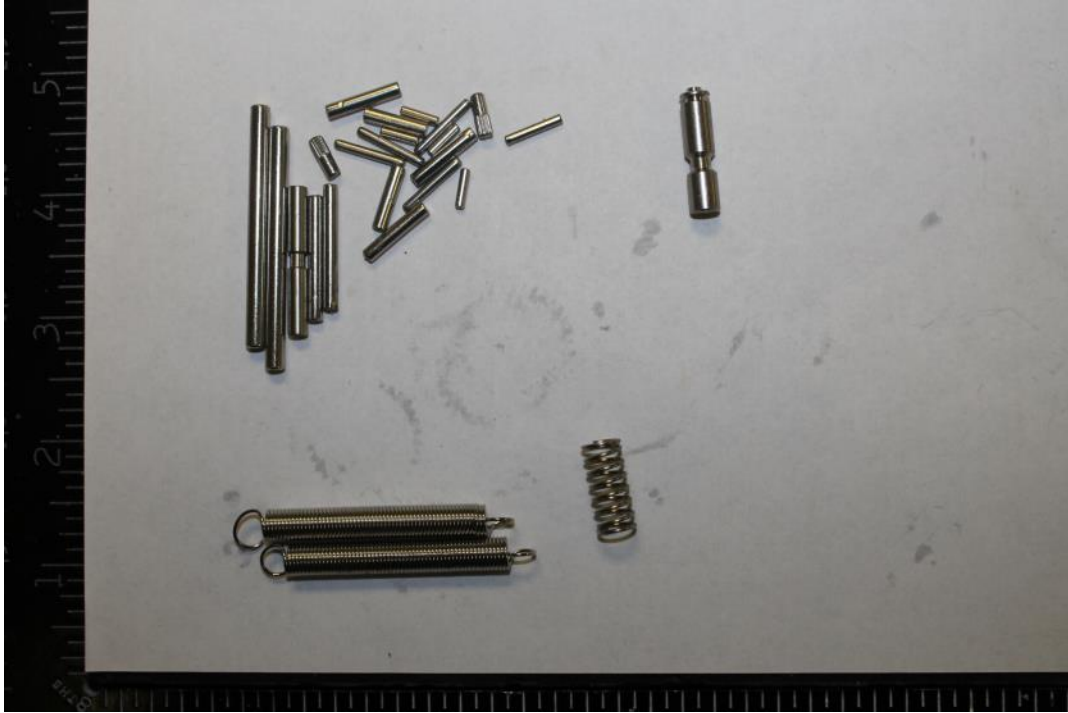
**Recycling Information:**

Nr.	Component	Material	Wt. (g)	Comments
17	Steel PCB Protector	Steel	34	Recycle



7. Material/components which have an economic value at end-of-life.

18

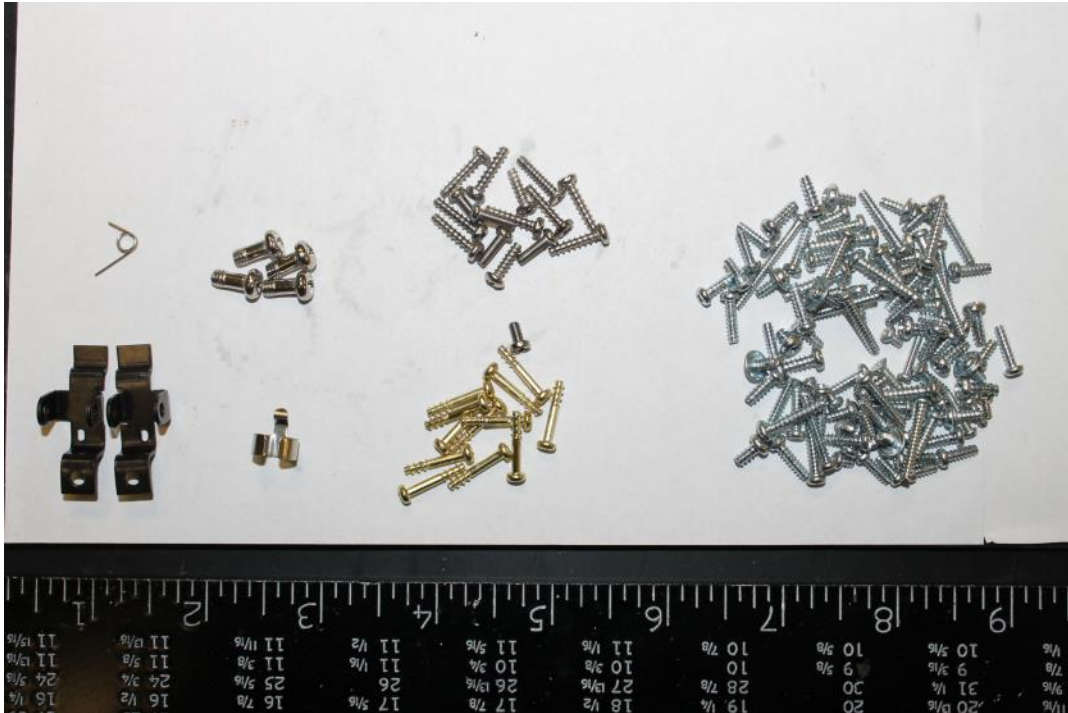
**Recycling Information:**

Nr.	Component	Material	Wt. (g)	Comments
18	Springs and Shafts	Steel	35	Recycle



7. Material/components which have an economic value at end-of-life.

19



Recycling Information:

Nr.	Component	Material	Wt. (g)	Comments
19	Screws	Steel	63	Recycle



7. Material/components which have an economic value at end-of-life.

20

**Recycling Information:**

Nr.	Component	Material	Wt. (g)	Comments
20	Charging Plates	Steel	3	Recycle



7. Material/components which have an economic value at end-of-life.

21

**Recycling Information:**

Nr.	Component	Material	Wt. (g)	Comments
21	Motors	Mixed	342	Reuse



7. Material/components which have an economic value at end-of-life.

22

**Recycling Information:**

Nr.	Component	Material	Wt. (g)	Comments
22	Speaker	Mixed	6	Reuse



7. Material/components which have an economic value at end-of-life.

23

**Recycling Information:**

Nr.	Component	Material	Wt. (g)	Comments
23	620 - EU Power Cord	Mixed	80	Reuse

8. Recycling Information Summary:

Nr.	Component	Material	Wt. (g)	Comments
1	Roomba Main PCBs	PCB	185	Treat Separately, 50% Recycle
2	Cables	Non-Reusable Cables	29	Treat Separately, 40% Recycle, 60% incinerate
3	Cable Sensor Assembly	Non-Reusable Cables	23	Treat Separately, 40% Recycle, 60% incinerate
4	Invisible Barrier PCB	PCB	11	Treat Separately, 50% Recycle
5	Charging Base PCB	PCB	15	Treat Separately, 50% Recycle
6	Charging Base Cables	Non-Reusable Cables	6	Treat Separately, 40% Recycle, 60% incinerate
7	Battery	Battery	687	Treat Separately, < Refer To Batteries Directive (2006/66/EC)>
Nr.	Component	Material	Wt. (g)	Comments
1	Wheel and Brush	Non-ID Plastic	17	Waste
2	PCB Shields	Non-ID Plastic	6	Waste
3	Gear Wheels	Non-ID Plastic	35	Waste
4	Brush Heads	Non-ID Plastic	112	Waste
5	Filters	Non-ID Plastic	38	Waste
6	Comb Cleaning Tool	Non-ID Plastic	7	Waste
7	Rubber Skids	Non-ID Rubber	3	Incinerate
8	Display circle	Non-ID Plastic	2	Waste

8. Recycling Information Summary:

Nr.	Component	Material	Wt. (g)	Comments
1	External casing	ABS	403	Recycle
2	Middle Chassis	ABS	517	Recycle
3	Handle, Front Bumper, and top Plates	ABS	287	Recycle
4	Dust Bin and Release Buttons	ABS	193	Recycle
5	Brush Holder	ABS	138	Recycle
6	Front Buttons and Wheel Spin	ABS	20	Recycle
7	Bumper Brackets, Button Bracket, and Dust bin motor Case	ABS	104	Recycle
8	Wheel casings	ABS	157	Recycle
9	Misc. Brackets	ABS	49	Recycle
10	Grey, Green, and Black Brackets	ABS	8	Recycle
11	Blue Wheel and Brush Brackets	ABS	8	Recycle
12	Outer Unit Ring	ABS	13	Recycle
13	Invisible Wall Casing	ABS	80	Recycle
14	Charging Dock Casing	ABS	130	Recycle
15	Floor and Unit Seal	PVC Rubber	6	Recycle

8. Recycling Information Summary:

Nr.	Component	Material	Wt. (g)	Comments
16	Skid Pieces and Seals	PVC Rubber	5	Recycle
17	Steel PCB Protector	Steel	34	Recycle
18	Springs and Shafts	Steel	35	Recycle
19	Screws	Steel	63	Recycle
20	Charging Plates	Steel	3	Recycle
21	Motors	Mixed	342	Reuse
22	Speaker	Mixed	6	Reuse
23	620 – EU Power Cord	Mixed		Reuse

Special notes:
Some other components can be recycled.
Please refer to the WEEE summary report.
All images for representative purposes only.