

iRobot® Verro™

OWNER'S MANUAL

Model 500



iRobot®
www.irobot.com
1.877.855.8593

Safety Notes

WARNING: Your cleaner should not be used while people are swimming in the pool.

A Ground Fault Current Interrupter (GFCI) must be installed to protect your electric outlet and prevent any possible electric shock. The unit must be supplied through a Ground Fault Current Interrupter outlet.

The connection to the branch circuit should be consistent with the local and national wiring rules (electrical code).

If the supply cord is damaged, it must be replaced by the manufacturer's service agent or a qualified and trained person in order to avoid hazards.

Always remember to turn the Power Supply OFF and unplug it from the power outlet before removing the cleaner from the pool.

Shut off and unplug the Power Supply every time you remove the cleaner from the water.

Do not leave the cleaner in the pool all the time.

Mishandling the unit can result in leakage of lubricants.

Please keep the plug away from contact with water.

Cautions

Please read this manual completely before operating your pool cleaner. Retain the safety and operating instructions for future reference.

Do not switch the pool cleaner ON if it is not fully immersed in water. Operating the cleaner out of water will cause severe damage immediately and will result in loss of warranty.

Allow the cleaner to remain in the pool for 15 to 20 minutes following the end of its cleaning cycle. This will allow the motors to cool adequately.

Do not use Verro in a pool warmer than 100 degrees Fahrenheit.

Do not use the floating power cord to lift Verro from the pool. Use the handle.

Do not force the floating power cord plug. It will fit into the socket only one way.

The floating power cord must be locked in the socket on the Power Supply.

Do not leave your cleaner in direct sunlight when not in use.

Never leave the Power Supply in direct sunlight and avoid leaving it in the rain.

Tips

Tip

Clean the filter bag regularly. Vero uses the force of the water pumped through its filter bag to maintain traction, particularly on the walls of the pool. If the filter bag is not kept clean, Vero will not clean properly and will not be able to climb the walls of the pool.

Tip

Change the direction of the handle before each cleaning run to prevent the floating power cord from becoming twisted and to improve coverage of the entire pool. (p. 8)

Tip

Store Vero in a dry place out of direct sunlight at a temperature between 50 and 104 degrees Fahrenheit. The Power Supply is water resistant, but not waterproof and may be damaged by rain. Important: Failure to properly store Vero will result in loss of warranty.

Tip

iRobot recommends using the mesh filter bag (available separately at www.irobot.com) when the pool contains a significant quantity of large debris (leaves, etc.), such as when the pool is opened for the season. The fine filter bag is ideal for filtering small debris (algae, sand, etc.) and for regular maintenance.

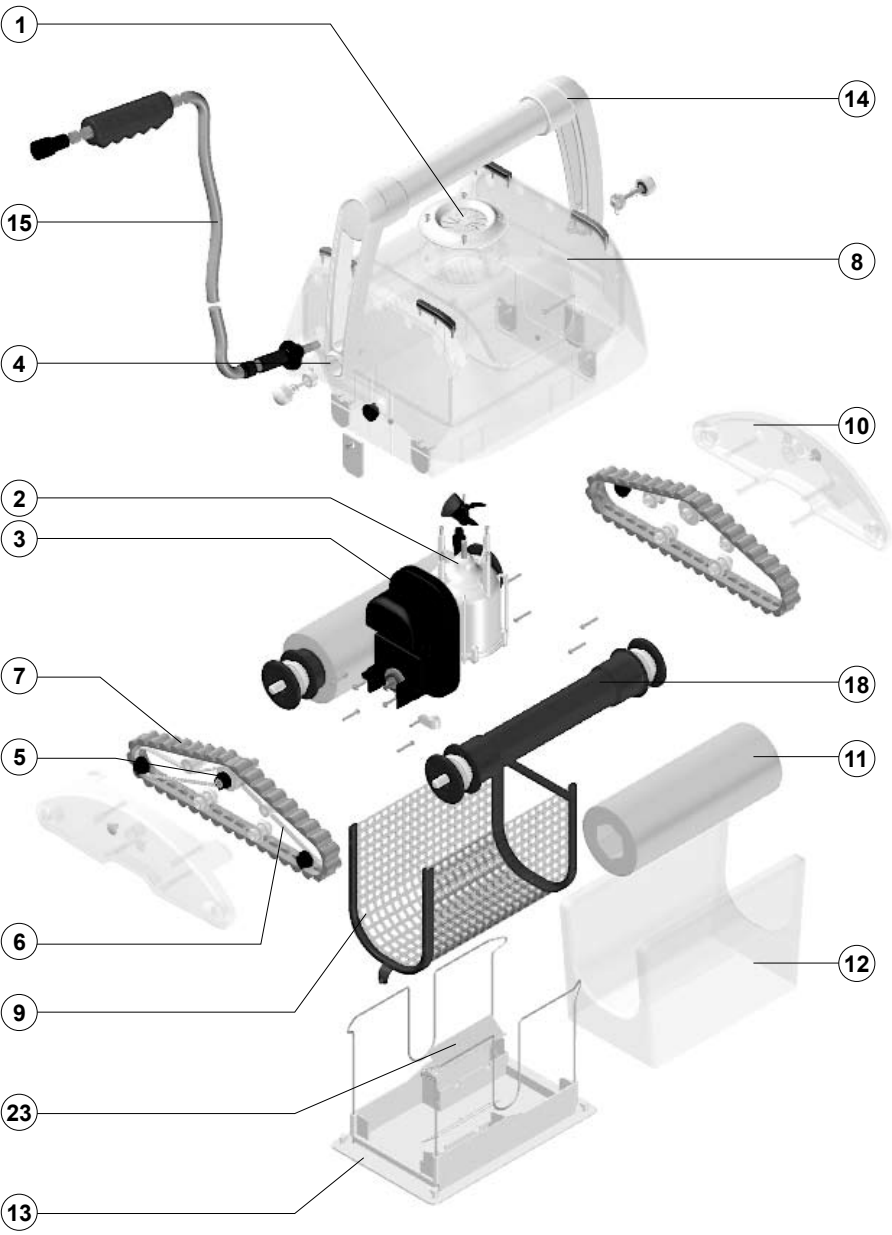
Tip

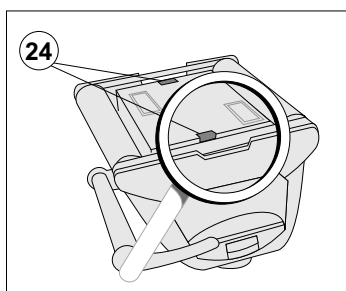
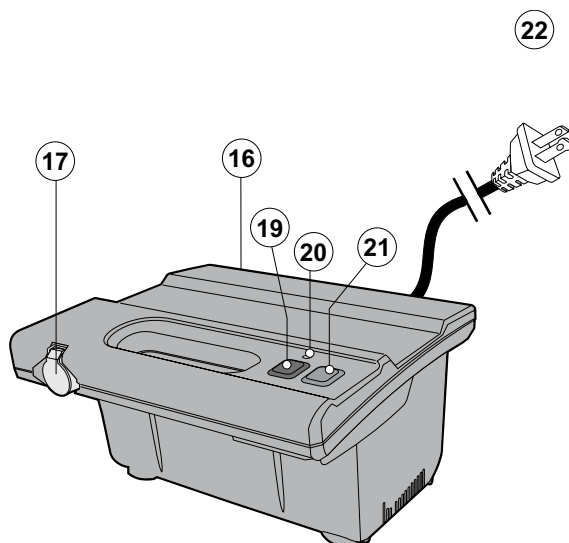
Periodically straighten the floating power cord with the Detangler.

Table of Contents

| | |
|---------------------------------|---------|
| Anatomy | 6 |
| Parts List..... | 7 |
| Using Verro | 8 - 10 |
| How Verro Works | 11 |
| Cleaning the Filter Bag..... | 12 - 13 |
| Maintenance and Adjustment..... | 14 - 18 |
| Troubleshooting..... | 19 - 20 |
| Customer Care..... | 21 |

Anatomy



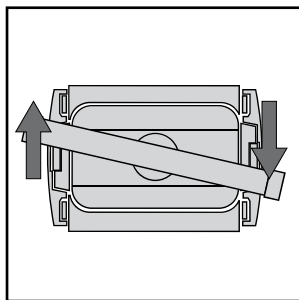
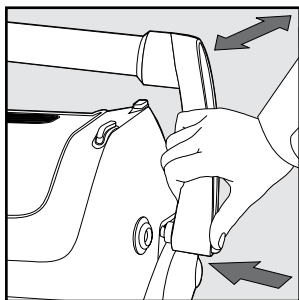


Parts List

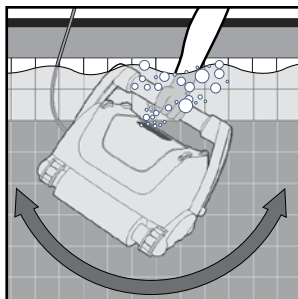
1. Outlet Top
2. Pump Motor
3. Drive Motor
4. Handle Lock Mechanism
5. Pulley Assembly
6. Drive Belt
7. Drive Track
8. Body Assembly
9. Filter Screen
10. Side Plate
11. PVA Brush
12. Filter Bag
13. Bottom Lid Assembly
14. Handle Assembly
15. Cable Assembly
16. Power Supply (Transformer)
17. Transformer Socket
18. Wheel Tube Assembly
19. OFF button
20. Light
21. ON button
22. Power Cord (Outlet)
23. Vacuum Intake Flaps
24. Lock Tabs

Using Verro

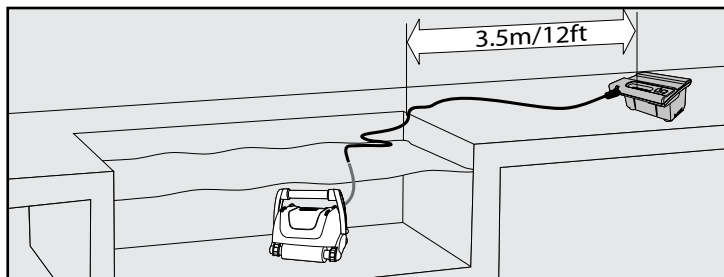
- 1 Position the handle diagonally across Verro. Each time Verro cleans the pool, reverse the direction of the handle. This will help keep Verro from twisting the floating power cord and ensure more even coverage.



- 2 Uncoil the floating power cord and spread it over the surface of the water.
- 3 Place Verro in the water and rock it from side to side to allow air to escape. Let Verro settle to the bottom of the pool. Ensure that it is right side up and level.

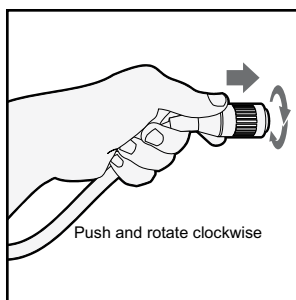
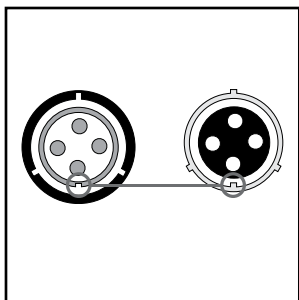


- 4 Place the Power Supply (transformer) at least 3.5 meters /12 feet from the pool.



Using Vero (cont...)

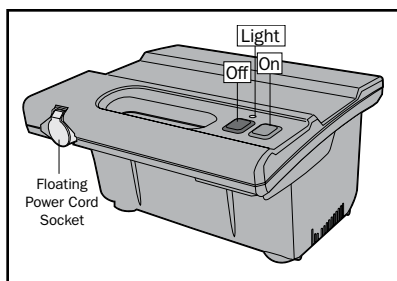
- 5** Plug the floating power cord in the Power Supply. Be sure not to force the plug as it will only go in one way. Once the plug is fully seated, turn the locking collar clockwise to lock it.



- 6** Ensure the Power Supply at least 12 feet from the pool and plug it into a GFCI outlet. Ensure the electric outlet has been properly grounded. Never leave the Power Supply plugged in when Vero is not in use.

Warning: A Ground Fault Current Interrupter (GFCI) must be installed to protect your electric outlet and prevent any possible electric shock.

- 7** Press the green Power button to start Vero; the light on the Power Supply will illuminate and Vero will start. The length of the cleaning cycle will vary based on pool size. To stop Vero before the end of the cleaning cycle, press the red Power button on the Power Supply.



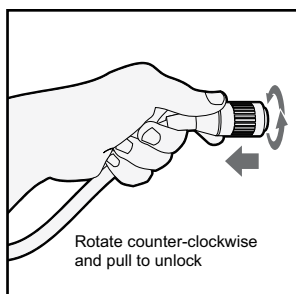
LIGHT: Light indicates that robot is ON.

ON: Green button turns robot ON.

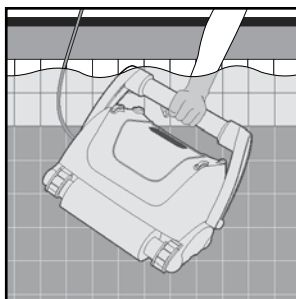
OFF: Red button turns robot OFF.

Using Verro (cont...)

- 8** When Verro has finished cleaning the pool it will stop automatically and the Power Supply light will go OFF.
- 9** Wait 20 minutes before removing Verro from the pool to allow the motors to cool. Shut off and unplug the Power Supply every time you remove the cleaner from the water. Always remember to turn the Power Supply OFF and unplug it from the power outlet before removing the cleaner from the pool.
- 10** Unplug the Power Supply from the GFCI outlet. Never leave the Power Supply plugged in when Verro is not in use.
- 11** Unplug the floating power cord from the Power Supply (turn the locking collar on the plug counter-clockwise to unlock it).



- 12** Use the floating power cord to pull Verro to the edge of the pool, but use the handle to lift Verro out of the water. Water will drain from Verro as it is lifted.



How Vero Works

Vero has a powerful motor that pumps 80 gallons of water per minute through the robot, generating suction at two vacuum intakes under the robot. The water passes through a filter bag that traps dirt and debris down to two microns in size. (For comparison, the period at the end of this sentence is more than 500 microns in size.)

The force of the water being pumped up through the bottom of the robot and out through the top helps Vero maintain traction on the pool bottom and walls.

Brushes at the front and back of the robot loosen particles attached to the walls and bottom of your pool so that they can be vacuumed up, along with all of the other loose dirt and debris.

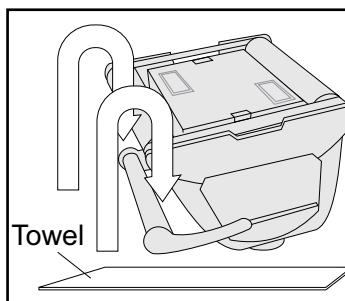
Vero's coverage algorithm allows Vero to brush and clean your pool all the way from the bottom to the waterline in 3 hours.

Cleaning the Filter Bag

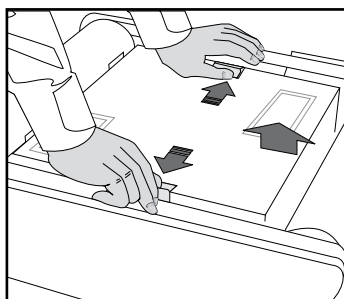
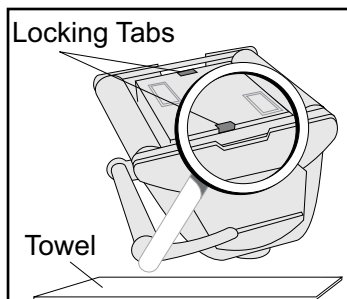
Verro uses the force of the water pumped through the filter bag to maintain traction on the pool floor bottom and walls. If the filter bag becomes clogged, Verro will not be able to clean as effectively and may have trouble moving along the bottom and up the walls properly.

- 1** Unplug the Power Supply. (Please keep the plug away from contact with water.) Unplug the floating power cord (turn the locking collar counter-clockwise to unlock it) from the Power Supply.

- 2** Place Verro upside down on a towel (to prevent scratching the robot's shell).

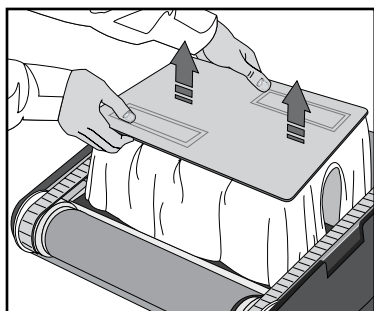


- 3** Unlock and remove the bottom panel by pushing the two locking tabs toward the sides of the robot.

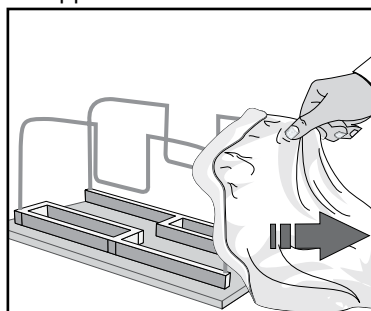


Cleaning the Filter Bag (cont...)

- 4** Remove the filter bag assembly.

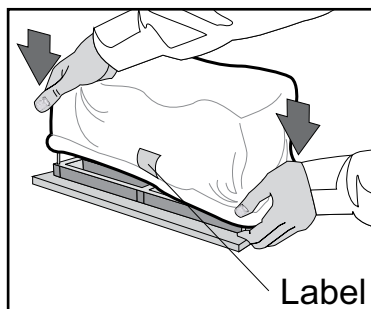


- 5** Remove the filter bag from the support bars.



- 6** Turn the filter bag inside out and rinse away any accumulated debris with a hose. Gently agitate and squeeze the bag while rinsing it until the water is clear. If this does not remove all visible dirt, machine wash the bag using cold water on the gentle cycle. Do not use detergents, fabric softeners, bleach or other additives. Do not machine dry.

- 7** Turn the filter bag so that the felt surface is on the inside and the smooth, shiny surface is on the outside and place it back on the support bars.



- 8** Replace filter bag assembly in the robot.

- 9** Replace the bottom cover. Make sure the tabs click into place.

Maintenance and Adjustment

Rinsing Vero

iRobot recommends that you rinse Vero with a garden hose after using it. This will extend the life of the plastic and keep your robot looking good for years to come.

Storage

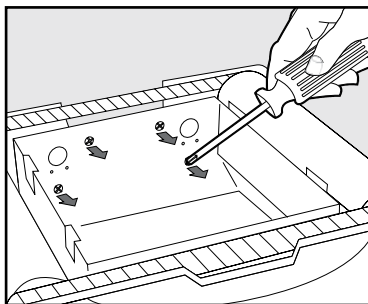
Store Vero in a dry place out of direct sunlight at a temperature between 50 and 104 degrees Fahrenheit. The Power Supply is water resistant, but not waterproof and may be damaged by rain. Important: Failure to properly store Vero will result in loss of warranty.

Changing the Brushes

Eventually, Vero's brushes will need to be replaced. It is time to replace them when Vero is riding on its side tracks instead of on the brushes.

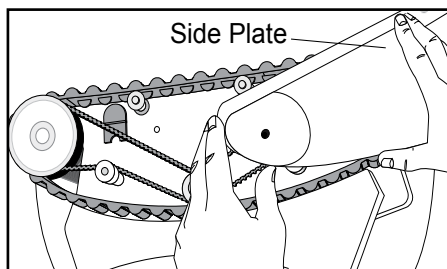
Please read these instructions carefully before proceeding. If you have any difficulty, please call our customer care representatives at **877.855.8593**. They will be happy to provide assistance.

- 1** Unplug the Power Supply. (Please keep the plug away from contact with water.) Unplug the floating power cord (turn the locking collar counter-clockwise to unlock it) from the Power Supply.
- 2** Place Vero upside down on a towel and remove the filter bag assembly. (p. 12)
- 3** Locate the side of the robot with the drive belts. Remove the four screws that hold on the corresponding plate.

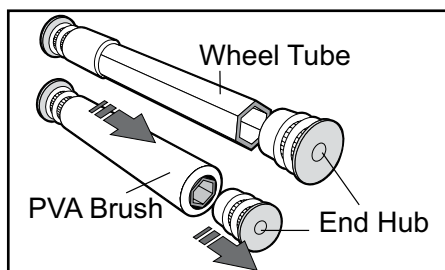


Maintenance and Adjustment (cont...)

- 4** Remove the side plate.



- 5** Note the arrangement of the drive belts and drive tracks and then remove the front and rear brush rollers.



- 6** Remove the end hubs from the rollers.
- 7** Pull the brushes off the wheel tubes. If the brushes are difficult to remove, soak them in water for 20 minutes.
- 8** Push the new brushes onto the wheel tubes.
- 9** Place the brushes back in robot, reinstalling the drive belts and drive tracks over the end hubs.
- 10** Replace the side plate.
- 11** Reattach the four screws.

Maintenance and Adjustment (cont...)

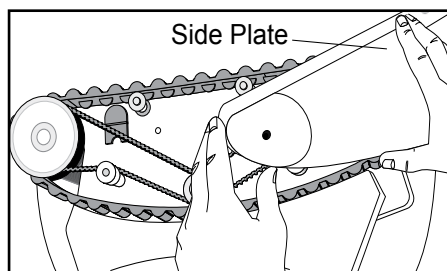
Changing the Drive Belts or Tracks

Over time, Vero's drive belts can stretch. When this happens, Vero may move more slowly and may have difficulty climbing the walls of the pool. You may also occasionally hear a click as the drive belt slips on its drive wheel.

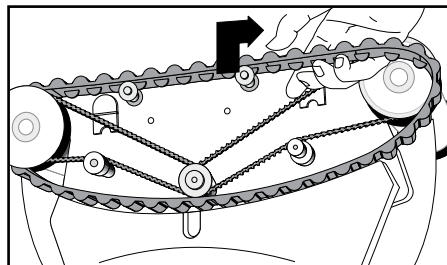
Please read these instructions carefully before proceeding.

If you have any difficulty, please call our customer care representatives at **877.855.8593**. They will be happy to provide assistance.

- 1** Place Vero upside down on a towel and remove the filter bag assembly. (p. 12)
- 2** On each side of the robot, remove the four screws that hold on the side plate.



- 3** Remove the side plates.
- 4** Remove the drive tracks.



Maintenance and Adjustment (cont...)

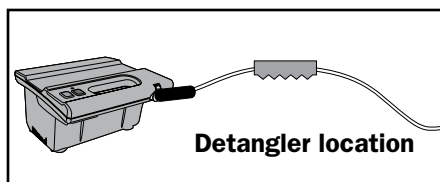
- 5 Noting carefully how they are installed, remove the drive belts.
- 6 Install the new drive belts and drive tracks.
- 7 Replace the side plates.
- 8 Reattach the four screws on each side.

Untwisting the Floating Power Cord

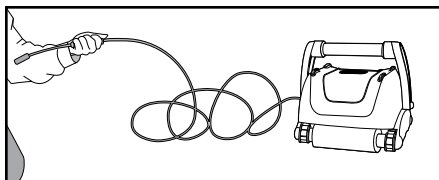
Check the floating power cord periodically for external damage.

Verro is designed to travel around your pool in a way that reduces any tendency for the cord to become twisted. However, if the cord tangles or kinks and will not lie properly on the surface of the water, it may be necessary to untwist it manually. Changing the direction of the handle before each cleaning run helps keep the floating power cord from getting twisted.

If the cord does become twisted, use the Detangler to untwist it.

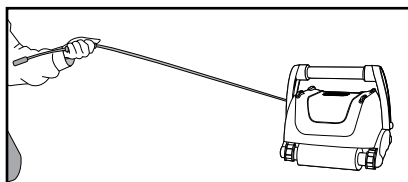
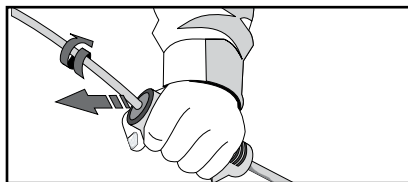


- 1 Unplug the floating power cord from the Power Supply.
- 2 Place Verro so that you can walk away from it for 50 feet.



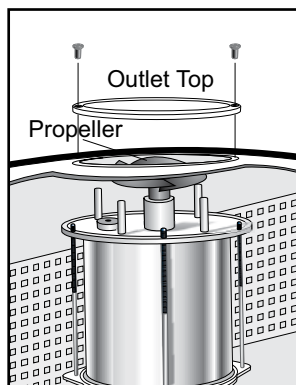
- 3 Holding the Detangler in your hand, walk away from the Verro. The Detangler allows the floating power cord to rotate in the handgrip so that it untwists as you walk.

Maintenance and Adjustment (cont...)



- 4 If the cord is not fully untwisted by the time it is straight, simply give it a few more turns by hand.

Cleaning the Impeller



- 1 Unplug the floating power cord from the Power Supply.
- 2 Remove the screws that attach the outlet top to the robot.
- 3 Lift off the outlet top.
- 4 Clean any debris from the propeller and shaft.
- 5 Replace the outlet top and reinstall the screws.

Troubleshooting

Many problems with Verro are caused by a dirty or clogged filter bag. Verro depends on water flowing freely through the filter bag to operate at peak efficiency. If the filter bag gets clogged, Verro will not move as well and will not be able to clean as effectively. The fine filter bag can trap particles as small as two microns across and can be clogged by particles too small to see. If rinsing the filter bag by hand with a hose does not solve the problem, try machine washing it in cold water. Do not use any detergent, fabric softeners, bleach, or any other additives. Do not machine dry the filter bag.

If you find the filter bag gets clogged too quickly, consider using the mesh bag instead (mesh filter bags are available separately from www.irobot.com).

Always turn off Verro's Power Supply and unplug it before troubleshooting any problem.

| Problem | Possible Cause | What to Do |
|--|--|---|
| Verro will not start a cleaning cycle | The Power Supply is not plugged in | Plug the Power Supply into a GFCI outlet. Keep the Power Supply at least 12 feet from the pool. |
| | The floating power cord is not plugged into the Power Supply | Plug the floating power cord into the Power Supply. When the plug is fully seated, turn the locking collar clockwise to lock it. (p. 9) |
| Verro is not cleaning properly | The filter bag needs to be cleaned | Clean the filter bag. (p. 12) |
| | The pump impeller is fouled | Clean the impeller. (p. 18) |
| Verro does not climb the walls of the pool | The filter bag needs to be cleaned | Clean the filter bag. (p. 12) |
| | The brushes, drive belts or drive tracks need replacing | Replace brushes, drive belts or drive tracks. (p. 16) |
| | The pump impeller is fouled | Clean the impeller. (p. 18) |
| The floating power cord is tangled or kinked | The floating power cord has become twisted | Use Detangler to untwist the cord. (p. 17) Remember to reverse the direction of the handle before each cleaning cycle. |

Troubleshooting (cont...)

| Problem | Likely cause | What to do |
|---|---|---|
| Verro does not cover the entire pool | The filter bag needs to be cleaned | Clean the filter bag. (p. 12) |
| | The brushes, drive belts or drive tracks need replacing | Replace drive belts and treads. (p. 16) |
| | The floating power cord is preventing Verro from reaching all parts of the pool | Use the Detangler to untwist the floating power cord. Position the Power Supply 12 feet away from the center one of the long sides of the pool. Ensure the floating power cord is not getting caught. Consider repositioning the Power Supply to keep the floating power cord away from objects on which it may get caught. |
| | The pump impeller is fouled | Clean the impeller. (p. 18) |
| Verro gets stuck on its floating power cord | The floating power cord is twisted | Use Detangler to untwist the cord. (p. 17) |

iRobot Customer Care

Please visit our web site at **www.irobot.com** for support tips, frequently asked questions or information about accessories and other iRobot products. We would like to hear from you.

Should you still need assistance, call our customer care representative at **877.855.8593**

iRobot Customer Care Hours:

- Monday – Friday 9AM – 7PM Eastern Time
- Saturday 9AM – 6PM Eastern Time

Register your iRobot® Verro™ today.
SAVE 15% on all accessories.*



Verro Accessories:

Mesh Filter Bag

Fine Filter Bag

iRobot Verro Storage Caddy

Visit our website to purchase accessories at:
800.727.9077 or visit **store.irobot.com**

**See registration card for details. Pricing and availability subject to change. Shipping and handling not included.*

iRobot®

© 2007 iRobot Corporation, 63 South Avenue, Burlington, MA 01803. All rights reserved.

iRobot is a registered trademark and Verro is a trademark of iRobot Corporation.

Cover photo © Veer Incorporated 2002 - 2005. All rights Reserved.