

iRobot[®]
Scooba[®]

FLOOR WASHING ROBOT

300 Series
OWNER'S MANUAL

Dear Scooba Owner

Congratulations and welcome to the world of iRobot! You have joined the growing number of people who have discovered a smarter way to clean.

iRobot Scooba is an innovative and easy-to-use product that will change the way you clean hard floors. Scooba frees you to manage other household tasks while it cleans, so you can wash your hard floors more frequently and get more done.

Thank you for joining the iRobot revolution. We look forward to bringing you more groundbreaking products that will change and improve your world.

On behalf of the entire iRobot team,



Colin Angle
Chairman, CEO and Co-founder, iRobot Corporation

Looking after your iRobot Scooba

For best results, use it often! Scooba is designed to work with only Scooba Hard Floor Cleaning Solution or plain tap water. Never use bleach in Scooba! After every use, rinse the tank, filter, and vacuum port. The brushes do a lot of the hard work, so it's best to take them out and remove the hair and fluff that collect around these.

Your Scooba is pretty smart in getting around, but it does need a little help. Before cleaning, sweep up large debris and clear away any clutter, furniture and lightweight rugs. General dust, dirt and grime are what it's there for, but avoid large liquid spills.

Extend the battery life by recharging it as soon as possible and storing your Scooba plugged in. For long-term storage, charge battery, then remove and store the battery in a cool, dry place.

Safety first As your Scooba contains electrical parts, don't submerge or spray it with water – clean with a damp cloth only.

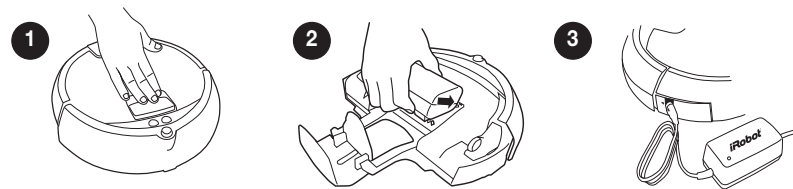
⚠ CAUTION: DO NOT USE SCOOBA ON THESE SURFACES:
Carpet or rugs, unsealed hardwood, waxed floors, or laminate flooring

How to get started

Charge Scooba

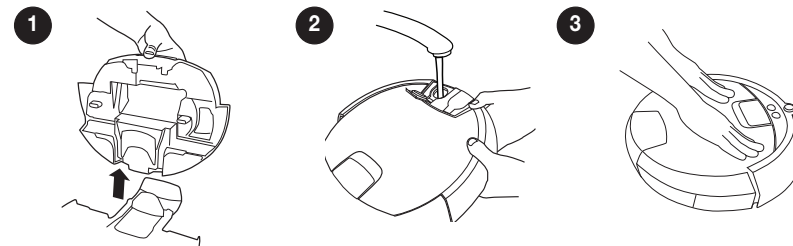
Pick Scooba up by the handle and set it down on a flat surface.

1. Press the handle down to release the tank. Remove the tank.
2. Insert the battery by aligning guide tabs and click it into place.
3. Plug in the battery charger and let the battery charge overnight (first time only).



Set up Scooba

1. Once Scooba is fully charged, remove the charging plug and remove the tank.
2. Fill the clean tank with water and optional Scooba Hard Floor Cleaner. For a shorter cleaning cycle, put less water in the tank. Close tank caps.
3. Place the tank back in Scooba and push the tank down until it clicks into place.



Ready to go!

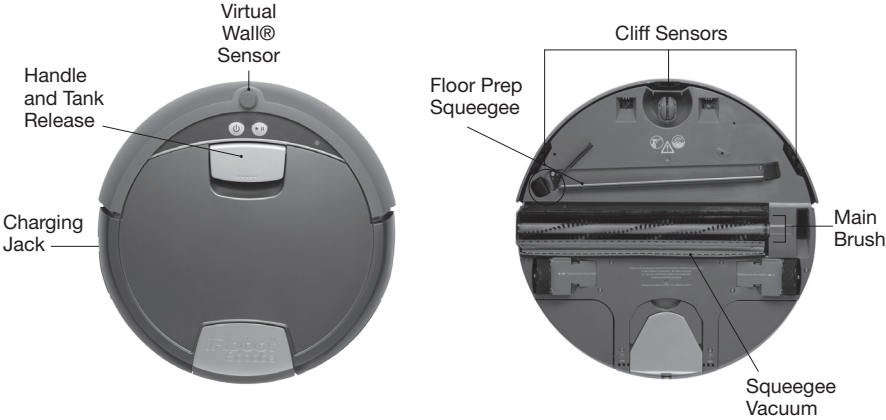
First, sweep up large debris and then place Scooba in the middle of the room.

- Press POWER to turn Scooba on.
- Press CLEAN to start a cleaning cycle.

Then just walk away and let your Scooba get to work (approximately 45 minutes for a full tank.)

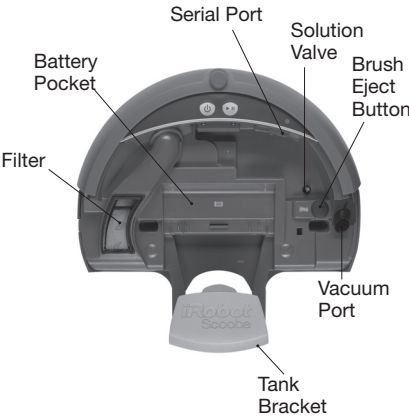
TIP: If you wish to end a cleaning cycle early, activate the internal drying mode first by pressing CLEAN while Scooba is cleaning. If Scooba is off, press POWER and then press CLEAN twice.

Scooba's Anatomy



Scooba has two main parts: the robot base, and the tank.

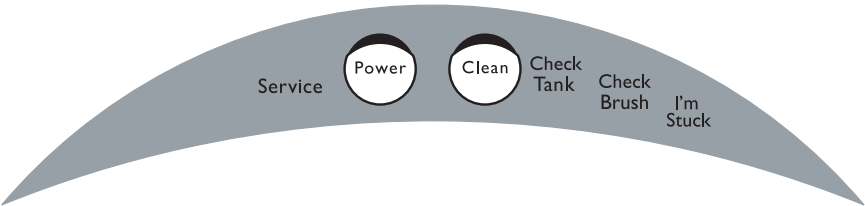
Robot Base



Scooba's Tank



Scooba's Lights



	Light Behavior	What it Means
Power	Red solid	Battery discharged
	Green pulsing	Battery charging
	Green solid	Battery fully charged
	Red blinking	Battery not installed
Clean	Green solid	Cleaning
	Green blinking	Internal drying mode
Check Tank	Green solid	The cleaning cycle is complete. Empty tank.
Check Brush	Yellow solid	Remove and clean brush and filter (see pages 5 - 6).
I'm Stuck	Yellow solid	Move and restart Scooba.
Service	Red blinking	Scooba needs help. Refer to troubleshooting section (see pages 11 - 12).

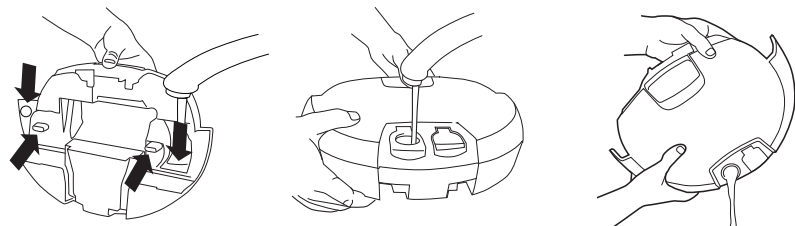
Scooba Essential Maintenance

To keep Scooba running at peak performance, perform the following maintenance tasks after every cleaning cycle.

Rinse and Empty Scooba's Tank

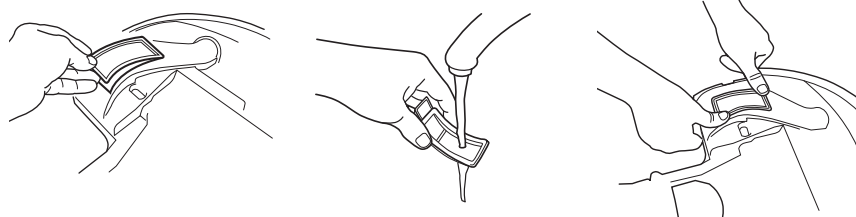
Scooba puts down fluid from the CLEAN tank and collects dirty solution into the DIRTY tank. Empty and rinse both tanks after every cleaning cycle.

- 1 Run water into the back openings.
- 2 Empty tanks and partially refill tanks with warm water.
- 3 Vigorously shake the tank and empty through all openings.

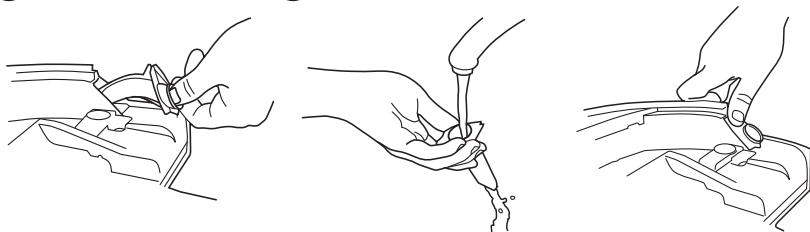


Rinse Scooba's Filter and Vacuum Port

- 1 Remove filter.
- 2 Rinse under water.
- 3 Replace item. Do not force.



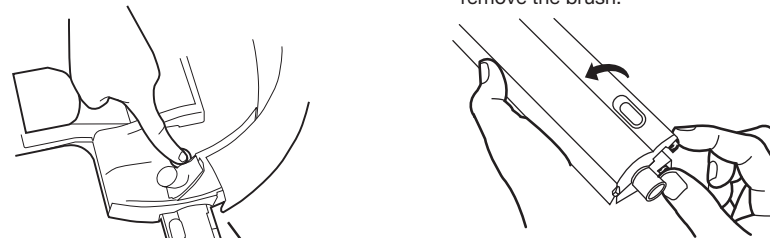
- 1 Remove vacuum port.
- 2 Rinse under water.
- 3 Replace item. Do not force.



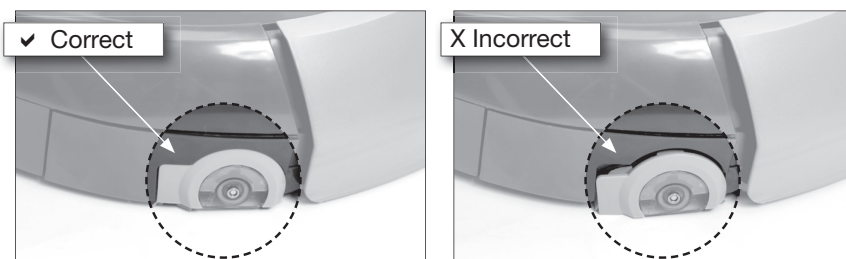
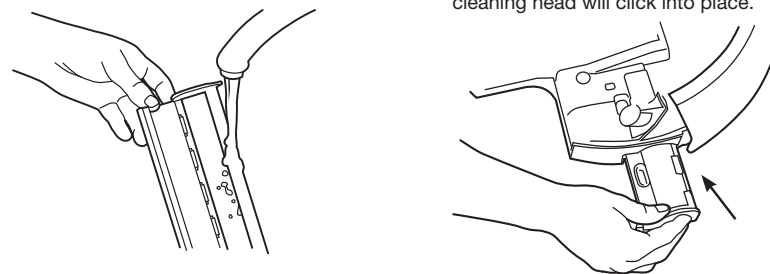
Clean Scooba's Cleaning Head and Brush

Scooba's brush is located inside a cartridge called the 'cleaning head'. Access to the cleaning head is inside Scooba, so the tank needs to be removed when removing and replacing the cleaning head.

- 1 With the tank removed, push eject button to remove the cleaning head.
- 2 Open the cleaning head by pushing the tabs in opposite directions, then remove the brush.



- 3 Rinse the cleaning head and brush under water.
- 4 Ensure the tank is removed before replacing the cleaning head. The cleaning head will click into place.



⚠ CAUTION: Scooba contains electronic components that can be damaged by spills of water or other liquids. Clean the bottom and top of Scooba with a damp cloth only. Do not pour or spray water onto Scooba, other than into the Clean or Dirty tanks.

Scooba Cleaning Solution

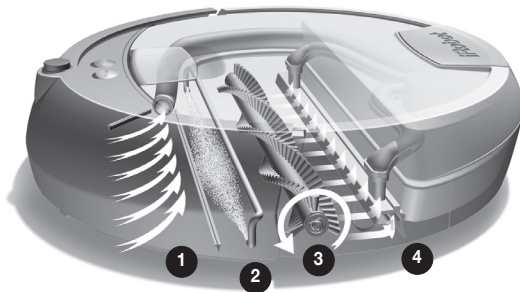
iRobot approves using Scooba with plain tap water or Scooba Hard Floor Cleaning Solution which is specially formulated to be tough on cleaning but safe around children and pets.



CAUTION: Use of other solutions may damage Scooba and voids the warranty. Never use bleach!

Scooba's Cleaning System

Scooba uses four cleaning stages in every pass. Scooba has a unique two chamber tank design that ensures fresh cleaning solution never mixes with the dirty water that Scooba picks up as it cleans.



- 1 **Preps** – Scooba picks up loose dirt and light debris from the floor.
- 2 **Washes** – Scooba continuously lays down a small amount of fresh cleaning solution.
- 3 **Scrubs** – Scooba gently scrubs to clean spills and grime.
- 4 **Vacuums** – Scooba's squeegee vacuum picks up dirty water and debris, leaving your floor clean.

Scooba will clean until it has used all of the solution in the Clean tank, approximately 45 minutes. At the end of a cleaning cycle, Scooba will enter a brief internal drying mode to remove water within its systems. During this time Scooba's Clean light will blink.

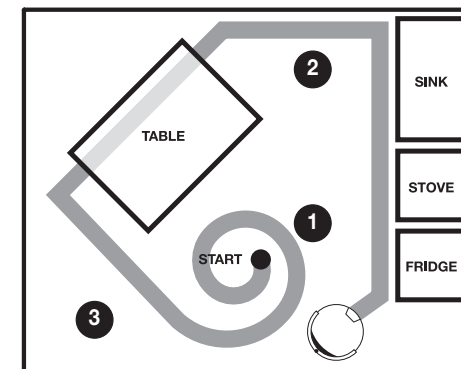
Scooba's Cleaning Pattern

Scooba is a robot that cleans differently than the way most people clean their floors. iAdapt™ Responsive Technology, iRobot's advanced, proprietary system of software and sensors, allows Scooba to get around, under and past everyday obstacles.

Note: Scooba's cleaning cycle takes approximately 45 minutes and will pass over the same area on the floor multiple times to ensure total coverage.

While Scooba is cleaning it calculates the best path to clean your floor and determines the best times to use its various cleaning behaviors:

- 1 **Spiraling:** Enables Scooba to efficiently clean a large area.
- 2 **Wall Following:** Enables Scooba to clean the room perimeter and navigate around furniture and obstacles.
- 3 **Room Crossing:** Enables Scooba to clean new areas while crisscrossing the room.



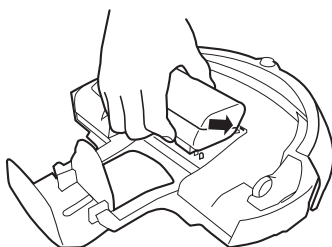
TIP: For best performance and floor coverage, clear your floor of chairs, clutter, and light rugs. Use a Virtual Wall to contain Scooba to one room. For smaller rooms, partially filling the tank will shorten Scooba's cleaning time.

Battery and Charging

Scooba is powered by a rechargeable battery and should be fully charged before each cleaning cycle. When fully charged (takes up to three hours), Scooba's battery will last for at least one full cleaning.

Install the battery

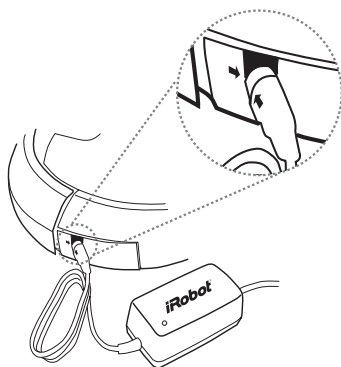
To install the battery, first align the two battery tabs with Scooba's guide holes. With the tabs inserted, push down on the battery and listen for a click as the battery clicks into place.



⚠ If the battery's tabs are not inside the guide holes in the battery pocket, the tank and robot base may not be properly connected.

Charge the battery

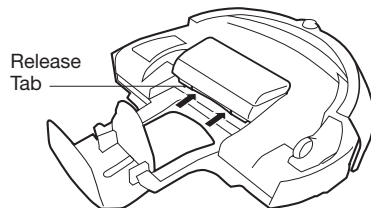
Charge Scooba's battery by plugging the charger into wall and connecting the charger to Scooba (lift charging jack cover). Always make sure that the green power light of the charger is ON while plugged into the wall.



TIP: For best battery performance, recharge the battery as soon as possible and store your Scooba plugged in. For long-term storage, remove and store the battery in a cool, dry place.

Remove the battery

To remove the battery, first grip the battery, making sure to push in the release tabs. Then lift the battery up and out of Scooba.



Scooba's Virtual Wall®

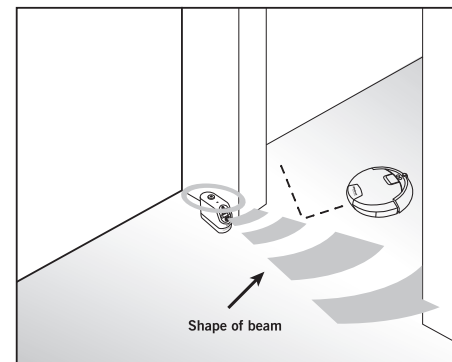
(included with select models)

The Scooba Virtual Wall creates an invisible barrier that Scooba will not cross. Virtual Walls can be set to block areas from 1 to 2.5 meters (1 to 8 feet).



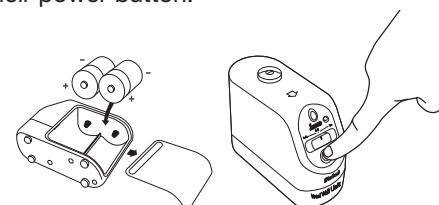
TIP: Use the Virtual Wall to block doorways or to keep Scooba away from cords.

The Virtual Wall beam is keyhole shaped. A small halo prevents Scooba from bumping the Virtual Wall and a larger beam blocks off areas of your home where you don't want Scooba to go.



TIP: For best performance, place the Virtual Wall on the outside of the doorway you wish to block, and always set the Virtual Wall to the shortest setting possible.

Virtual Walls require 2 "D" batteries. Virtual Walls will automatically shut themselves off at the end of a cleaning cycle, or they can be manually shut off by pressing their power button.



Troubleshooting

Warning Lights

Scooba has several warning lights that tell you if the robot needs assistance.

Warning Light	Possible Cause	What To Do
Power Light (Red)	Battery is discharged	Recharge Scooba's battery (see page 9).
"Check Tank" Light	The clean tank is empty (normal at end of cycle)	Empty the tank and fill partially with warm water. Shake the tank vigorously and empty it out.
	The tank is not properly secured	Confirm battery, filter and vacuum port are properly installed. Ensure the tank is completely closed.
	The pump needs to be primed	Prime Scooba's pump with the included suction bulb (see page 12).
"Check Brush" Light	The brush is jammed	Remove and clean Scooba's brush and cleaning head. With cleaning head and tanks removed, turn Scooba over, inspect and clean the cleaning head area.
	The cleaning head is improperly installed	Remove and replace Scooba's cleaning head (see page 6).
	The filter is missing	Remove, rinse and replace Scooba's filter. Ensure filter is installed properly (see page 5).
"I'm Stuck" Light (followed by "uh-oh" and a number of beeps)	(1 beep) One of Scooba's wheels is off the floor	Inspect Scooba's wheels. Push each wheel up and down, place the robot back on the floor and press Clean.
	(2 beeps) The front wheel is stuck	Ensure that the front wheel can spin freely. Lightly push the wheel up and down. The front wheel can easily be removed, cleaned, and replaced.
	(3 beeps) Bumper problem	Tap the bumper to ensure that it moves in and out. Visually inspect the bumper edges for debris.
	(4 beeps) Scooba's cliff sensors are dirty or malfunctioning	Clean cliff sensors with a cotton swab (see page 3 for sensor location). The cliff sensors are located in the bumper and are accessed by turning Scooba over.
	(5 beeps) Left or right wheel malfunction	Inspect Scooba's drive wheels. Spin the wheels by hand and confirm that they offer some resistance. If tires are damaged, replace tires.
Service Light (followed by 4-tone alarm and a number of beeps)	(1 beep) Pump error	Contact iRobot customer care.
	(2 beeps) Vacuum error	Contact iRobot customer care.
	(3 beeps) Battery error	Contact iRobot customer care.
	(4 beeps) Charger error	Contact iRobot customer care.
	(5 beeps) Battery is too hot	Make sure Scooba was not recently filled with water or charged in a hot place. Wait for Scooba and the battery to cool down and try again.

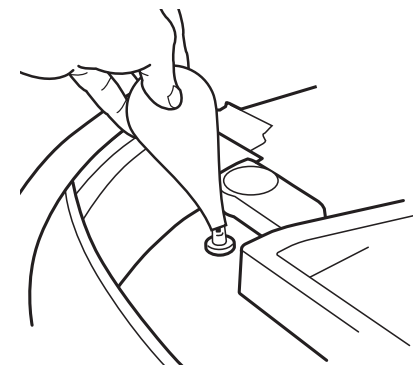
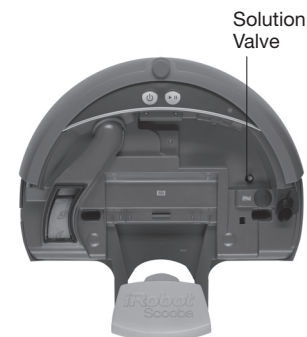
General Troubleshooting

Refer to the table below to resolve Scooba's problem.

Problem	Possible Cause	What To Do
Scooba will not power on	Power is off	Press Power, then press Clean to start Scooba.
	Battery is not charged	Charge Scooba's battery (see page 9).
	Battery is not correctly seated	Remove battery and ensure that battery tabs are placed inside Scooba's guide holes before closing Scooba's tank.
	Warning Light is on	Refer to Warning Light troubleshooting (see page 11).
Excessive foam coming out of Scooba	There is too much cleaning solution concentrate in Clean tank	Empty and rinse the Clean tank thoroughly. When re-filling, make sure to use only 7 ml of Scooba cleaning solution and to fill the Clean tank completely to the rim with water.
Cleaning head sticks out of Scooba, will not engage	Cleaning head is not closed tightly over the brush	With the tank open, slide the cleaning head out of Scooba. Squeeze the cleaning head completely closed over the brush before re-inserting it into its proper location (see page 6).

Priming Scooba's Pump

Scooba's powerful cleaning system includes a pump that distributes cleaning solution from the tank onto the floor. To prime your pump, fit the end of the suction bulb over Scooba's solution valve. Push air through Scooba's pump system 3 or 4 times.



Important Safety Instructions

CAUTION: DO NOT EXPOSE THE ELECTRONICS OF SCOوبا, ITS BATTERY, OR THE BATTERY CHARGER. THERE ARE NO USER SERVICEABLE PARTS INSIDE. REFER SERVICING TO QUALIFIED SERVICE PERSONNEL. PLEASE ENSURE VOLTAGE RATING FOR ENCLOSED BATTERY CHARGER MATCHES STANDARD OUTLET VOLTAGE. Always exercise caution when operating your Scoوبا. To reduce the risk of injury or damage, keep these safety precautions in mind when setting up, using and maintaining Scoوبا:

GENERAL SAFETY INSTRUCTIONS

- Read all safety and operating instructions before operating Scoوبا.
- Retain the safety and operating instructions for future reference.
- Observe all warnings on Scoوبا, battery, charger and in owner's manual.
- Follow all operating and use instructions.
- Refer all non-routine servicing to iRobot.
- This appliance is not intended for use by persons (including children) with reduced physical, sensory or mental capabilities, or lack of experience and knowledge, unless they have been given supervision or instruction concerning use of the appliance by a person responsible for their safety.
- Children should be supervised to ensure they do not play with the appliance.

SCOوبا SAFETY

- Scoوبا is for indoor use only.
- Scoوبا is not a toy. Do not sit or stand on the robot. Small children and pets should be supervised when Scoوبا is cleaning.
- Clean with a damp cloth only. Do not submerge this robot in water.
- Do not use this robot to pick up anything that is burning or smoking.
- Do not use this robot to pick up spills of bleach, paint, or other chemicals.
- Before using this robot, pick up objects such as clothing, loose papers, pull cords for blinds and curtains, power cords and any fragile objects. If the robot passes over a power cord and drags it, there is a chance an object could tumble off a table or shelf.
- If the room to be cleaned contains a balcony, a physical barrier should be used to prevent access to the balcony and ensure safe operation.
- Always remove the battery before long-term storage or transportation of the robot.

SCOوبا BATTERY AND CHARGING SAFETY

- Operate your Scoوبا only from the type of power source indicated on the marking label. If you are not sure of the type of power supplied in your home, consult your local power company.
- Charge using a standard outlet only. Product may not be used with any type of power converter. Use of other power converters will immediately void the warranty.
- Use only the charger supplied by the manufacturer to charge this device.
- Do not use a charger with a damaged cord or plug.
- Charge indoors only.
- Never handle chargers with wet hands.
- Always disconnect Scoوبا from the charger before cleaning.

SCOوبا USE RESTRICTIONS

- Do not use Scoوبا on carpets, rugs, unsealed hardwood, stone or laminate flooring.
- Do not use bleach, ammonia, or hot water as it may damage the robot and void the warranty.
- Store and operate Scoوبا in room temperature environments only.
- Do not use Scoوبا to clean up pooled spills (e.g., spilled gallon of milk).

DECLARATION OF CONFORMITY

iRobot Scoوبا® Vacuum Cleaning Robot and Accessories
 Manufacturer: iRobot Corporation, 8 Crosby Drive, Bedford, MA 01730, USA
 Declares that Scoوبا along with Model L13143 and 5961 Battery Chargers conform to the requirements of Low Voltage Directive 2006/95/EC as amended by 93/68/EC and EMC Directive 2004/108/EC as amended by 93/68/EC and 2004/108/EC.
 Standards below have been applied:
 EN 60335-2-2:2003 + A1:2004 + A2:2006
 Household and similar electrical appliances - Safety - Part 2-2: Particular requirements for vacuum cleaners and water-suction cleaning appliances.
 EN 60335-1:2002 + A1:2004 + A11:2004 + A12:2006 + A2:2006 + A13:2008
 Household and similar electrical appliances. Safety . General requirements.
 EN 60335-2-29:2004
 Household and similar electrical appliances – Safety Part 2-29: Particular requirements for battery chargers.
 EN 55014-1:2000 + A1:2001 + A2:2002
 Electromagnetic compatibility - Requirements for household appliances, electric tools and similar apparatus – Part 1: Emission
 EN 55014-1:1997 + A2:2002
 Electromagnetic compatibility - Requirements for household appliances, electric tools and similar apparatus – Part 2: Immunity - Product family standard

iRobot Customer Care USA

If you have questions or comments about Scoوبا, please contact iRobot before contacting a retailer.

Please visit our web site at www.irobot.com for support tips, frequently asked questions, or information about accessories and other iRobot products.

Should you still need assistance:

- Visit the iRobot support web site at www.irobot.com/support
- Call our customer care representatives at 877.855.8593

iRobot Customer Care International

To contact an international partner near you for sales and technical support, visit www.irobot.com/international.